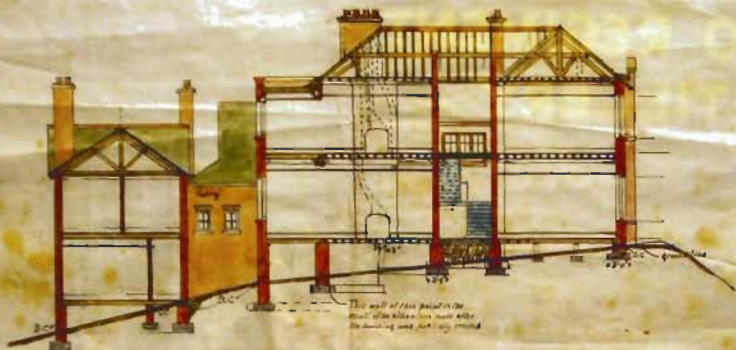


HEAD QUARTERS FOR DEVEN R.G.D. TERRITORIALS,
PLYMOUTH



SECTION D-D

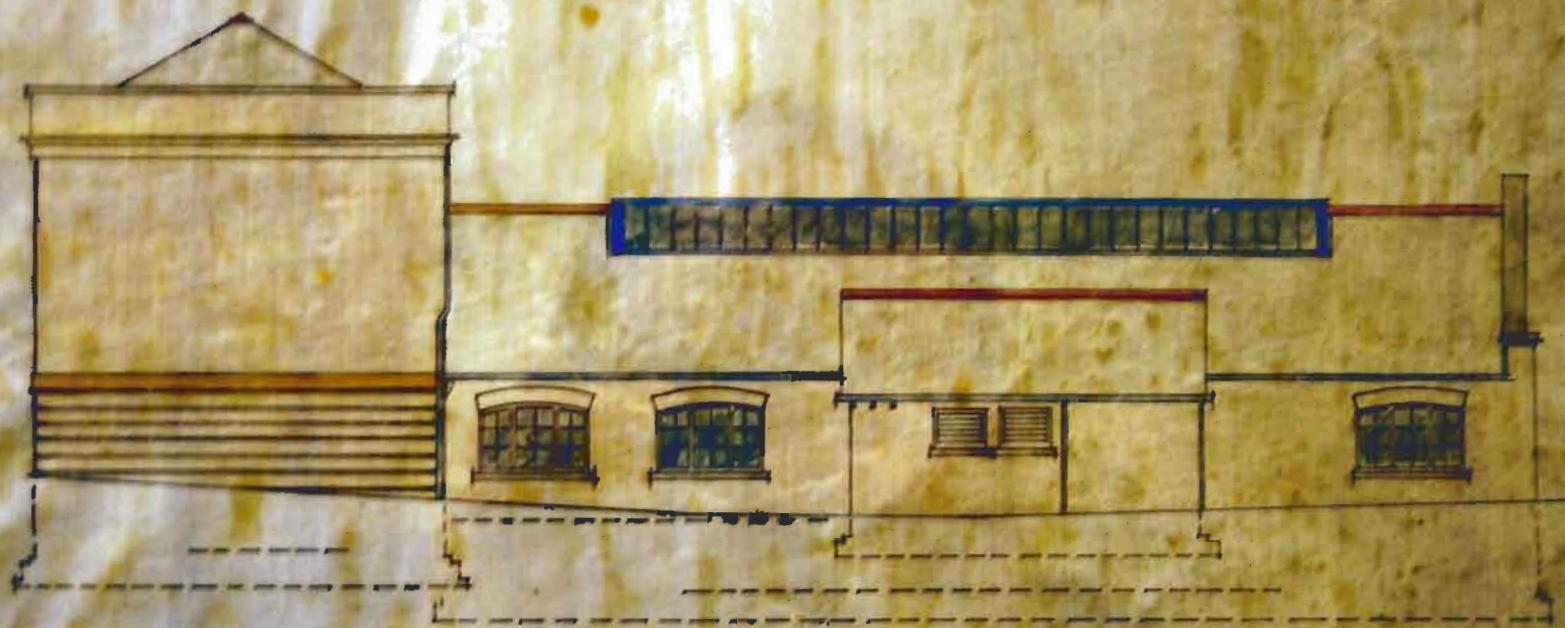


Scale 1/4" = 1'-0"

Wm. H. ...
1897



N. ELEVATION.



S. ELEVATION.

*A. Lamborne Parker 1810
Architect 30 Bedford Street 11, 12
Nov. 1852.*

Foot of 1 inch:



E. ELEVATION



PROPOSED H. Q. FOR THE DEVON (FORTRESS) R.E.

LAMBHAY GREEN PLYMOUTH.

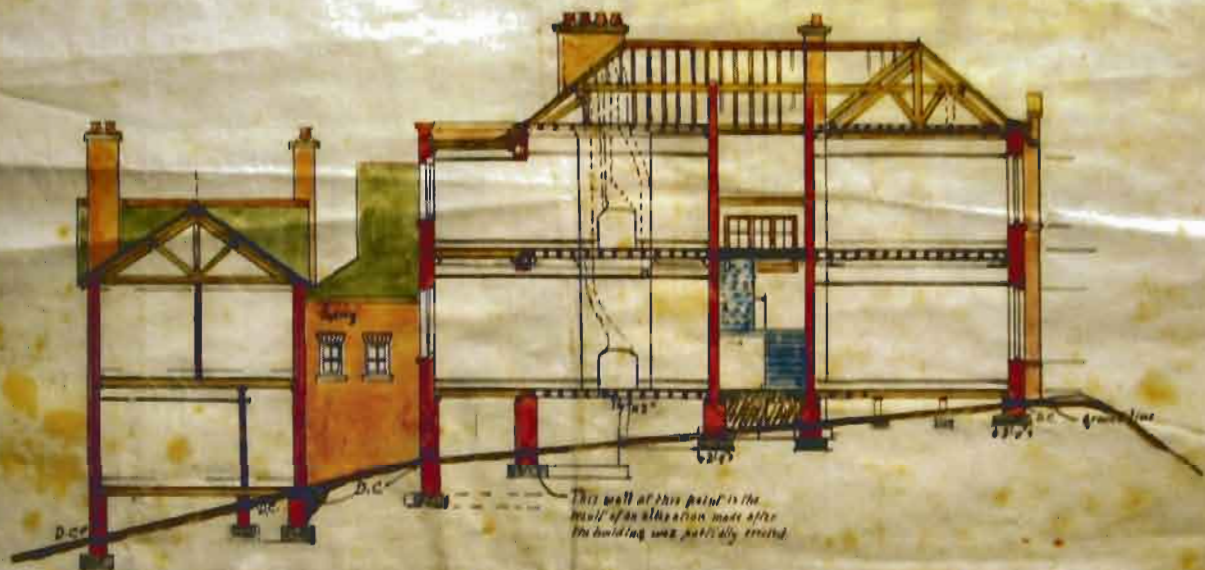


W. ELEVATION.



T. Ross Pittsford
 Architect
 Plymouth

PLYMOUTH



SECTION D-D

ROYAL ARTILLERY
29 COMMANDO REGIMENT



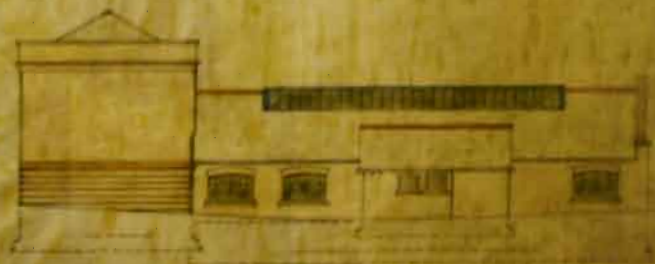
W ELEVATION



N ELEVATION



E ELEVATION



S ELEVATION



Architect's Name
Date